

CRISTALLO 2 27M ÷ 70M

SINGLE Split



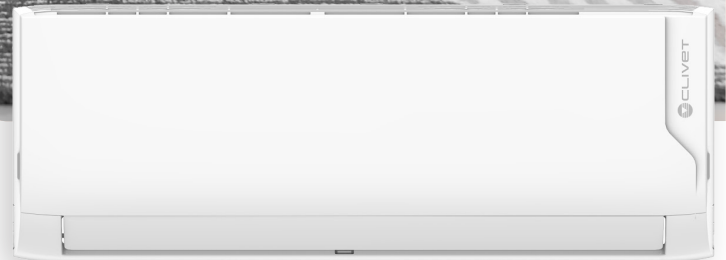
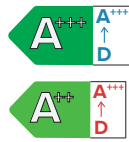
Wi-Fi
READY



CONTROL
SYSTEM



21
dB(A)



SINGLE Split with hiwall indoor unit

WHY CHOOSE CRISTALLO2?

- ✓ ALTO Panel Design with strong but elegant lines, in matt finish with contrasting logo
- ✓ Purification filter: active against odours, dust, VOC, pollen, spores, bacteria
- ✓ Smart management as standard: via smartphone with the NetHome Plus App and voice control setup with Amazon Alexa and Google Assistant
- ✓ SINGLE Split/MULTI Split compatible

MULTI-DIRECTIONAL AIRFLOW

The air conditioning unit can distribute the flow of air in multiple directions: to better direct the flow within the room, it electronically adjusts the direction of the louvers both horizontally and vertically.



THE standard control can be used to easily set the desired louvers position.

BREEZE AWAY

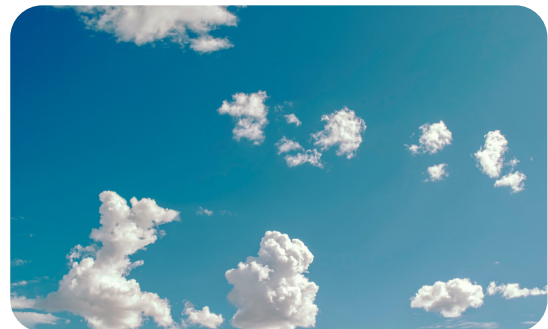
This function prevents the air flow from being directed directly at people, creating discomfort.

The fan moves at minimum speed.



PURIFICATION FILTER

- ✓ High density filter: Removes larger dust and microbes, protects other filters. It is washable and reusable
- ✓ Cold catalyst filter: Oxidises various hazardous gases (such as VOC) by decomposing them into inert substances such as H₂O or carbon dioxide. It also limits odours
- ✓ Activated carbon filter: Chemically absorbs microparticles and bacteria, cleaning the air and eliminating odours
- ✓ Silver ion filter: Continuously releases silver ions to eliminate up to 99% of airborne bacteria, while also limiting their growth and proliferation. Also active on viruses



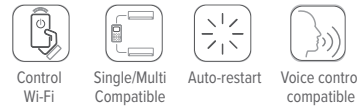
COMFORT



RELIABILITY



CONVENIENCE



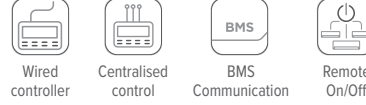
ENERGY SAVING



HEALTH



OPTIONAL



SINGLEsplit

technical data

Set			27M	35M	53M	70M	
Cooling capacity	Standard (Min.=Max.)	Btu/h	9.000 (3.500÷11.000)	12.000 (4.700÷14.700)	18.000 (11.570÷20.100)	20.100 (7.200÷28.000)	
	Standard (Min.=Max.)	kW	2,64 (1,03÷3,22)	3,52 (1,38÷4,31)	5,27 (3,39÷5,90)	5,88 (2,11÷8,20)	
Heating capacity	Standard (Min.=Max.)	Btu/h	10.000 (2.800÷11.500)	13.000 (3.640÷15.000)	18.400 (10.600÷20.000)	22.700 (5.300÷28.000)	
	Standard (Min.=Max.)	kW	2,93 (0,82÷3,37)	3,81 (1,07÷4,38)	5,39 (3,10÷5,85)	6,66 (1,55÷8,20)	
Standard power supply	Cooling (Min.=Max.)	W	628 (80÷1.100)	1.005 (130÷1.650)	1.550 (560÷2.050)	1.770 (420÷3.200)	
	Eating (Min.=Max.)	W	651 (70÷990)	977 (160÷1.560)	1.440 (780÷2.000)	2.130 (300÷3.100)	
Rated current input	Cooling (Min.=Max.)	A	2,73 (0,35÷4,78)	4,37 (0,60÷7,20)	6,70 (2,40÷9,00)	7,67 (1,80÷13,9)	
	Eating (Min.=Max.)	A	2,83 (0,32÷4,32)	4,24 (0,70÷6,78)	6,23 (3,40÷8,70)	7,70 (1,30÷13,5)	
Seasonal efficiency ¹	Cooling	Energy class	-	A+++	A+++	A++	A+
		Design load (Pdesign)	kW	2,60	3,50	5,30	7,00
		SEER	-	8,80	8,50	7,00	6,40
	Average season	Annual energy consumption	kWh/a	103	144	265	383
		Energy class	-	A++	A+	A+	A+
		Design load (Pdesign)	kW	2,40	2,60	4,20	4,90
	Warmer season	SCOP	-	4,60	4,60	4,00	4,00
		Annual energy consumption	kWh/a	730	791	1.470	1.715
		Energy class	-	A+++	A+++	A+++	A+++
	Standard efficiency ²	EER	-	4,20	3,50	3,40	3,33
COP		-	4,50	3,90	3,76	3,76	

Indoor unit			IMA1-Y	27M	35M	53M	70M
Article code				89682314	89682313	89682315	89682312
Dimensions	Unit	L x D x H	mm	802x200x295	802x200x295	969x241x320	1083x244x336
	Packaging	L x D x H	mm	875x285x380	875x285x380	1045x315x405	1155x315x415
System weight	Unit/Packaging		kg	8,7/11,5	8,7/11,5	11,2/14,6	13,6/17,3
Air filter	Type			PUF	PUF	PUF	PUF
Airflow		Hi/Mid/Lo	m ³ /h	510/360/300	520/370/310	800/600/500	1090/770/610
Dehumidification capacity			l/h	1,00	1,20	1,80	2,70
Sound power		Hi	dB(A)	54	55	56	62
Sound pressure level		Hi/Mid/Lo	dB(A)	37/31/22	39/33/22	41/37/31	46/37/35
Control systems	Infrared remote control			RG10A4-D2S-BGEF	RG10A4-D2S-BGEF	RG10A4-D2S-BGEF	RG10A4-D2S-BGEF
	Settable temperature		°C	16÷30	16÷30	16÷30	16÷30
Power supply	Voltage/Frequency/Phases		V/Hz/n°	230 / 50 / 1	230 / 50 / 1	230 / 50 / 1	230 / 50 / 1

Outdoor unit			MMA1-Y	27M	35M	53M	70M
Article code				89682319	89682321	89682320	89682318
Dimensions	Unit	L x D x H	mm	765x303x555	765x303x555	805x330x554	890x342x673
	Packaging	L x D x H	mm	887x337x610	887x337x610	915x370x615	995x398x740
System weight	Unit/Packaging		kg	26,4/28,8	26,4/28,8	33,5/36,1	43,9/46,9
Sound power		Nominal	dB(A)	58	61	65	67
Sound pressure level		Nominal	dB(A)	54	55	57	60
Operating range	Cooling	Indoor T.	°C	16÷32	16÷32	16÷32	16÷32
		Outdoor T.	°C	-15÷50	-15÷50	-15÷50	-15÷50
	Heating	Indoor T.	°C	0÷30	0÷30	0÷30	0÷30
		Outdoor T.	°C	-20÷24	-20÷24	-15÷24	-15÷24
Refrigerant	Type/GWP			R-32 / 675	R-32 / 675	R-32 / 675	R-32 / 675
Power supply	Voltage/Frequency/Phases		V/Hz/n°	230 / 50 / 1	230 / 50 / 1	230 / 50 / 1	230 / 50 / 1

¹ SEER and SCOP data, relative energy ratings and annual energy consumption in conformity to the EN 14825 standard measurement.

² EER/COP values declared only for tax deductions in force at the time this document was written. CCF = Cold Catalyst Fan speed: Hi=High; Mid=Medium; Lo=Low; Si=Silent

Test conditions: according to EN14511 / EN12102

Cooling: indoor air temperature 27°C DB/19°C WB; outdoor air temperature 35°C DB/24°C WB; Heating: indoor air temperature 20°C DB/15°C WB; outdoor air temperature 7°C DB/6°C WB.

Data declared according to UE 626/2011 delegated regulation

refrigerant piping and connections

Set			27M	35M	53M	70M
Max equivalent length		m	25	25	30	50
Max difference in level ODU / IDU		m	±10	±10	±20	±25
Refrigerant precharge		kg / m	0,62 / 5	0,62 / 5	1,10 / 5	1,45 / 5
External diameters	Liquid	mm / inch	Φ6,35 - 1/4"	Φ6,35 - 1/4"	Φ6,35 - 1/4"	Φ9,52 - 3/8"
	Gas	mm / inch	Φ9,52 - 3/8"	Φ9,52 - 3/8"	Φ12,7 - 1/2"	Φ15,9 - 5/8"

electrical connections

Set			27M	35M	53M	70M
ODU	Power supply	V/Hz/n°	230 / 50 / 1	230 / 50 / 1	230 / 50 / 1	230 / 50 / 1
		no. of cables	2 + G	2 + G	2 + G	2 + G
IDU	Power supply	V/Hz/n°	230 / 50 / 1	230 / 50 / 1	230 / 50 / 1	230 / 50 / 1
		no. of cables	2 + G	2 + G	2 + G	2 + G
	Signal	no. of cables	2	2	2	2

accessories

Standard

RG10A-D2S-BGEF Infrared remote control for CRISTALLO 2 / EZCool / BOX 2 / CONSOLE 3 / DUCT 2 / C&F 2 indoor units

NWMX Wi-fi kit for indoor units

Optionals

MKSS2X Multifunction board that makes the indoor unit available for Remote ON / OFF, Alarm port and XYE Port (required for connection of Wired controller, Centralized wired controller, Data Converter, BMS Gateway)

The ON-OFF/Alarm/XYE/Wi-Fi port functions can be used simultaneously

Control Systems (see dedicated section)